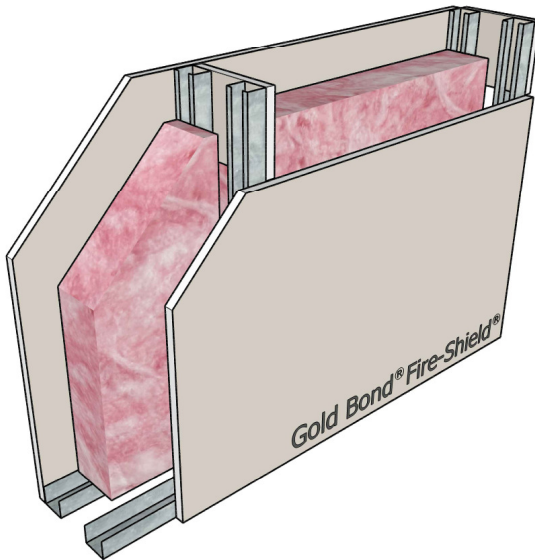


## Steel Stud Chase Walls

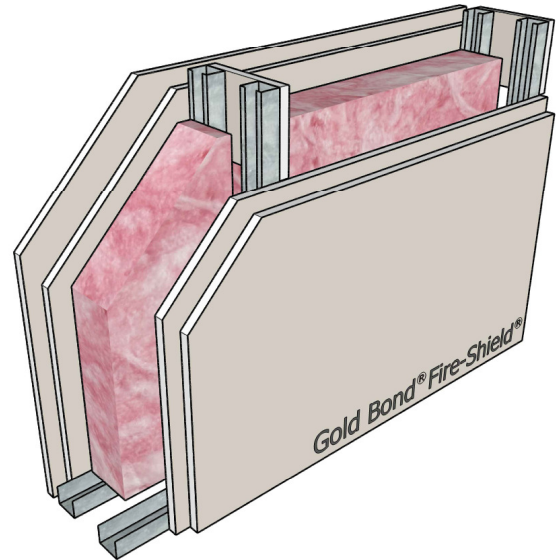
Figure 72



**STC-52** **RAL-TL76-155**

Framing: Double row 1-5/8" steel studs, 25 gauge, 24" o.c., braced with gypsum board gussets  
 Insulation: 3-1/2" glass fiber  
 Side 1: 5/8" Fire-Shield Gypsum Board  
 Side 2: 5/8" Fire-Shield Gypsum Board  
 UL Design: U420 - 1 hour

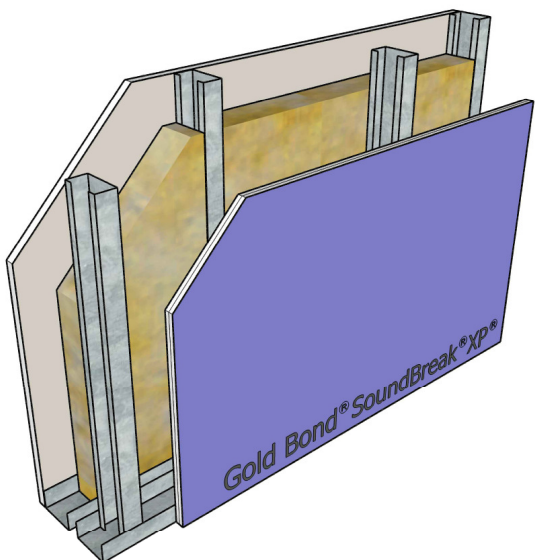
Figure 73



**STC-57** **RAL-TL76-156**

Framing: Double row 1-5/8" steel studs, 25 gauge, 24" o.c., braced with gypsum board gussets  
 Insulation: 3-1/2" glass fiber  
 Side 1: 2 layers 5/8" Fire-Shield Gypsum Board  
 Side 2: 2 layers 5/8" Fire-Shield Gypsum Board  
 UL Design: U420 - 2 hour

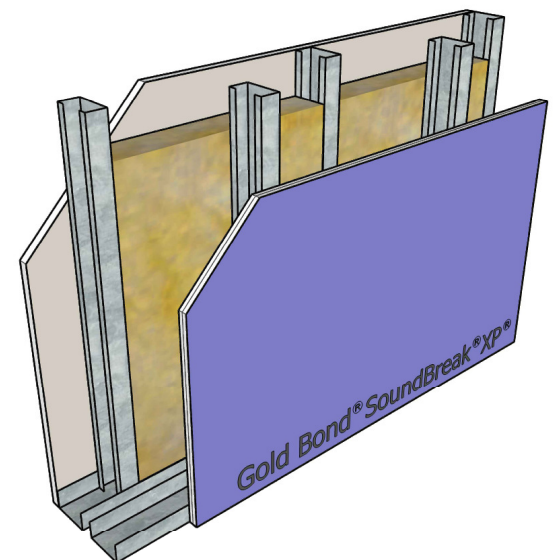
Figure 74



**STC-59** **NGC 2008036**

Framing: Double row 2-1/2" steel studs, 25 gauge, 24" o.c. staggered  
 Insulation: 3" mineral wool  
 Side 1: 5/8" Fire-Shield Gypsum Board  
 Side 2: 5/8" SoundBreak XP Gypsum Board  
 UL Design: V488 - 1 hour

Figure 75



**STC-57** **NGC 2008035**

Framing: Double row 2-1/2" steel studs, 25 gauge, 16" o.c. staggered  
 Insulation: 3" mineral wool  
 Side 1: 5/8" Fire-Shield Gypsum Board  
 Side 2: 5/8" SoundBreak XP Gypsum Board  
 UL Design: V488 - 1 hour