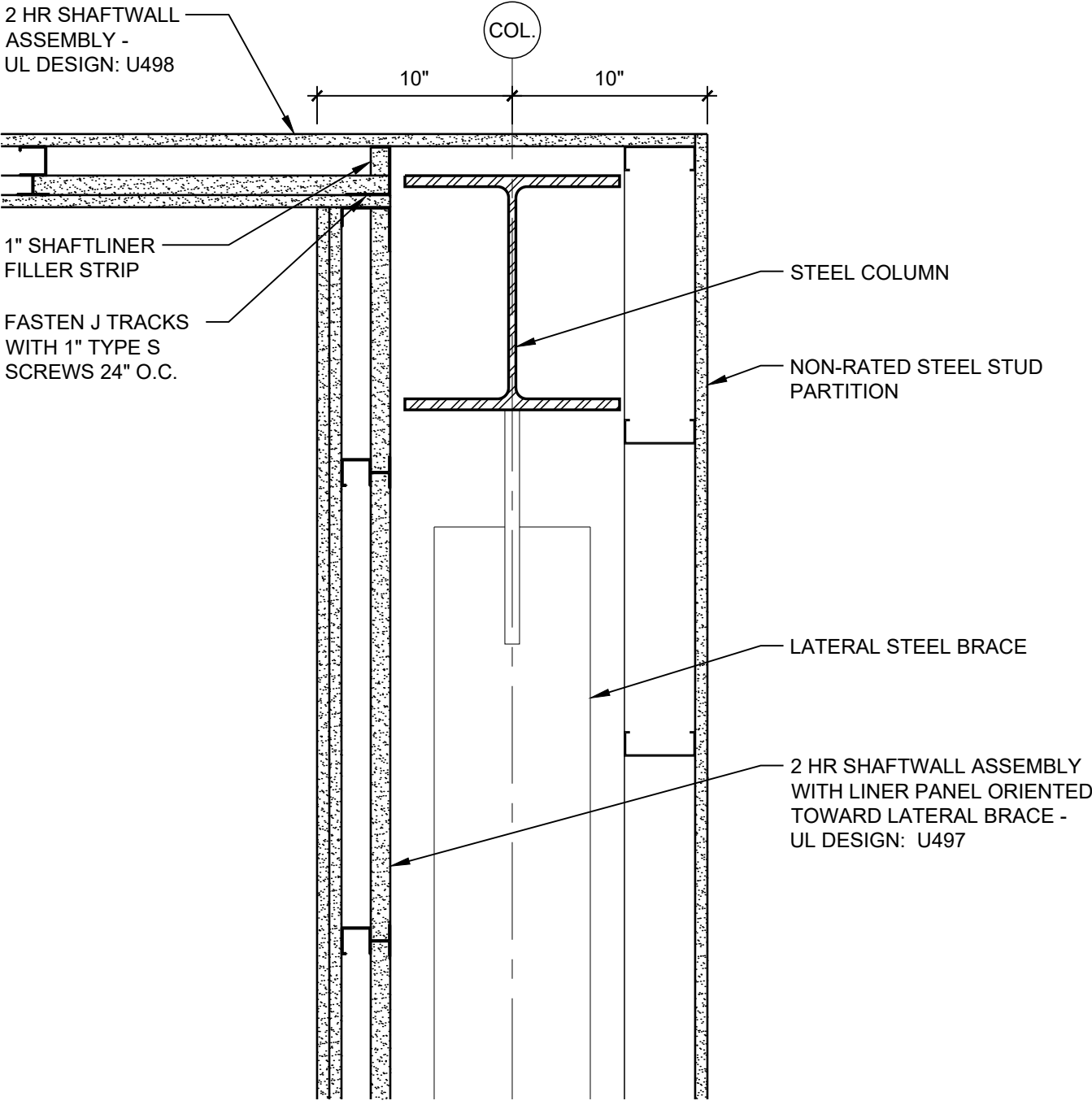
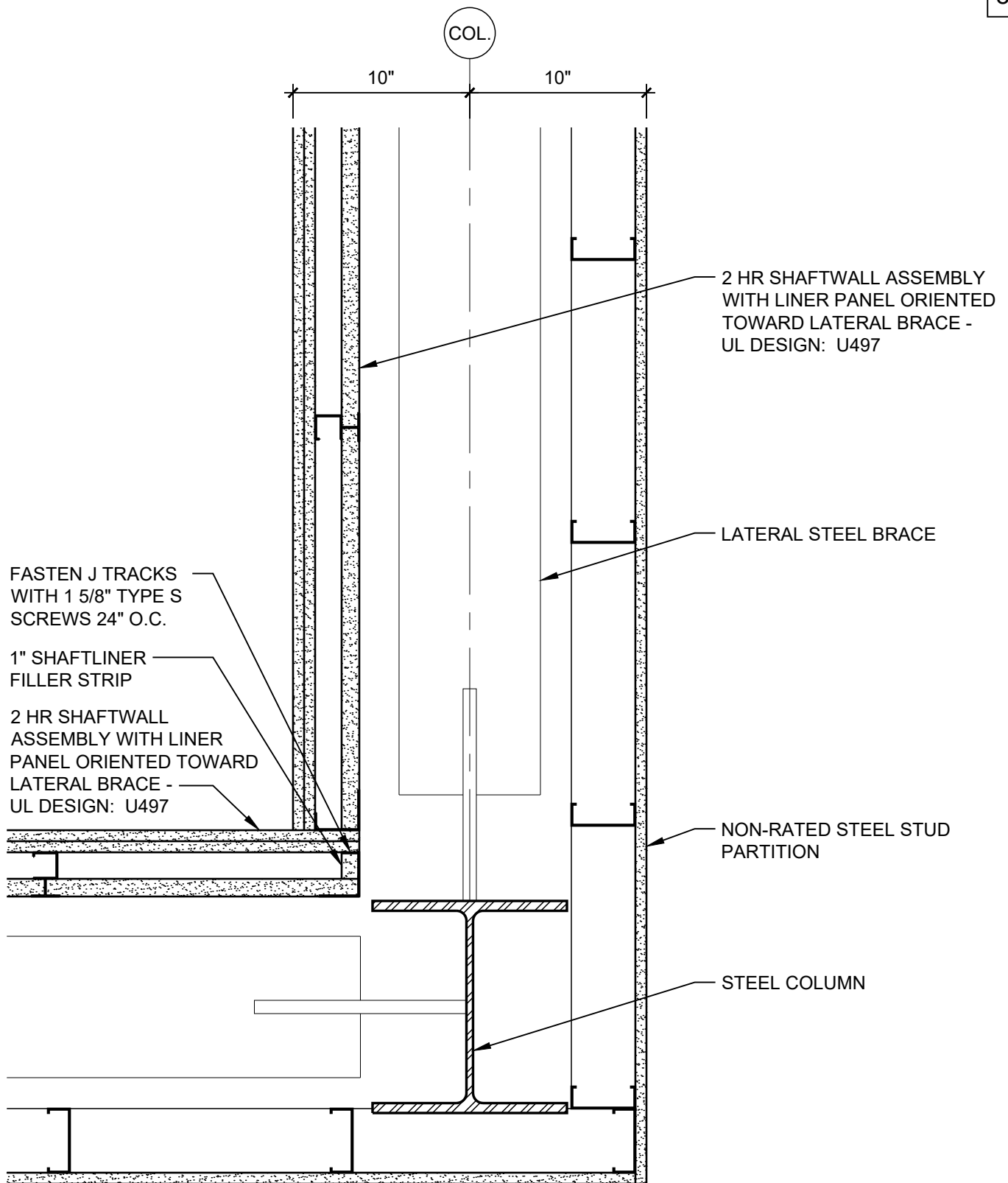


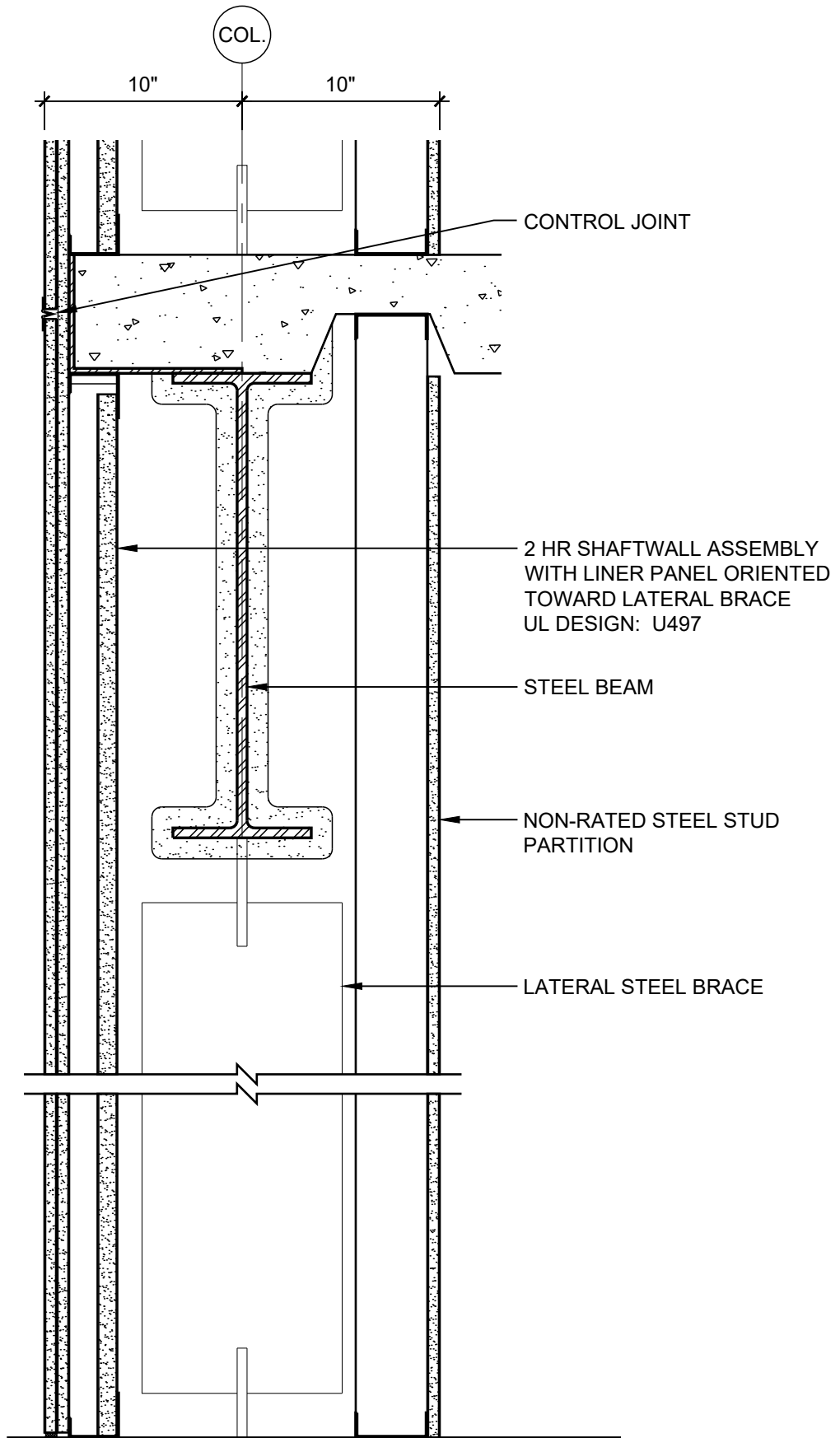
DATE: 09/01/18	FLOOR PLAN OF STAIR AT LATERAL BRACE	
SCALE: 3/8"=1'-0"	DETAIL: ST 101	



DATE: 09/01/18	STAIR SHAFTWALL CORNER AT LATERAL BRACE	
SCALE: 1 1/2"=1'-0"	DETAIL: ST 102	



DATE: 09/01/18	STAIR SHAFTWALL CORNER AT LATERAL BRACE	
SCALE: 1 1/2"=1'-0"	DETAIL: ST 103	



DATE: 09/01/18	STAIR SHAFTWALL SECTION AT LATERAL BRACE	
SCALE: 1 1/2"=1'-0"	DETAIL: ST 104	