

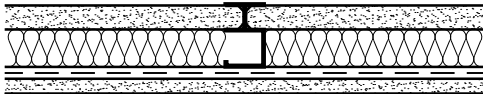
UL DESIGN: U499, W419



- 1" FIRE-SHIELD SHAFTLINER
- 2 1/2" 25GA. CT, CH, OR I STUDS **24" O.C.**
- 1 1/2" GLASS FIBER INSULATION
- 5/8" FIRE-SHIELD GYPSUM BOARD

**STC 42**  
TEST: NGC 2542

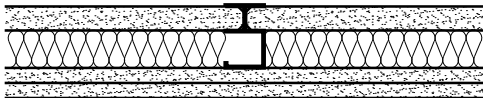
UL DESIGN: U499, W419



- 1" FIRE-SHIELD SHAFTLINER
- 2 1/2" 25GA. CT, CH, OR I STUDS **24" O.C.**
- 1 1/2" GLASS FIBER INSULATION
- 1/2" RESILIENT CHANNEL 24" O.C.
- 5/8" FIRE-SHIELD GYPSUM BOARD

**STC 48**  
TEST: NGC 2541

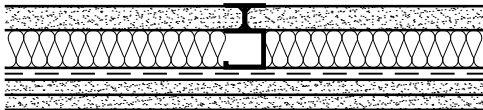
UL DESIGN: U497, W419



- 1" FIRE-SHIELD SHAFTLINER
- 2 1/2" 25GA. CT, CH, OR I STUDS **24" O.C.**
- 1 1/2" GLASS FIBER INSULATION
- 2 LAYERS 5/8" FIRE-SHIELD GYPSUM BOARD

**STC 48**  
TEST: NGC 2507

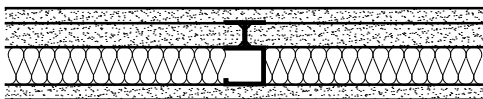
UL DESIGN: U497, W419



- 1" FIRE-SHIELD SHAFTLINER
- 2 1/2" 25GA. CT, CH, OR I STUDS **24" O.C.**
- 1 1/2" GLASS FIBER INSULATION
- 1/2" RESILIENT CHANNEL 24" O.C.
- 2 LAYERS 5/8" FIRE-SHIELD GYPSUM BOARD

**STC 51**  
TEST: NGC 2540

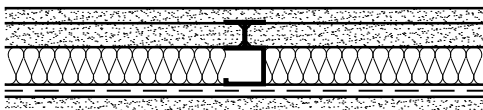
UL DESIGN: U498, W419



- 5/8" FIRE-SHIELD GYPSUM BOARD
- 1" FIRE-SHIELD SHAFTLINER
- 2 1/2" 25GA. CT, CH, OR I STUDS **24" O.C.**
- 1 1/2" GLASS FIBER INSULATION
- 5/8" FIRE-SHIELD GYPSUM BOARD

**STC 48**  
TEST: NGC 2534

UL DESIGN: U498, W419



- 5/8" FIRE-SHIELD GYPSUM BOARD
- 1" FIRE-SHIELD SHAFTLINER
- 2 1/2" 25GA. CT, CH, OR I STUDS **24" O.C.**
- 1 1/2" GLASS FIBER INSULATION
- 1/2" RESILIENT CHANNEL 24" O.C.
- 5/8" FIRE-SHIELD GYPSUM BOARD

**STC 52**  
TEST: NGC 2538

DATE: 11/05/13
SCALE: 1 1/2"=1'-0"

**SOUND RATINGS FOR SHAFTWALL PARTITIONS**

DETAIL: SN 103

