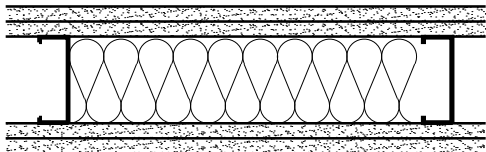


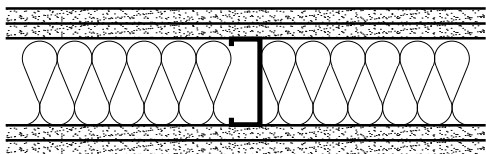
UL DESIGN: U411, V438



2 LAYERS 5/8" FIRE-SHIELD GYPSUM BOARD  
3 5/8" 25GA. STEEL STUDS 16" O.C.  
3 1/2" GLASS FIBER INSULATION  
2 LAYERS 5/8" FIRE-SHIELD GYPSUM BOARD

**STC 50**  
TEST: NGC 2500

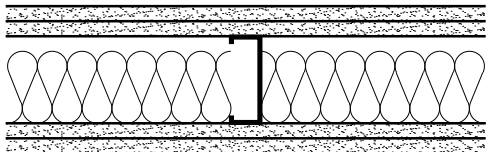
UL DESIGN: U411, V438



2 LAYERS 5/8" FIRE-SHIELD GYPSUM BOARD  
3 5/8" 25GA. STEEL STUDS 24" O.C.  
3 1/2" GLASS FIBER INSULATION  
2 LAYERS 5/8" FIRE-SHIELD GYPSUM BOARD

**STC 53**  
TEST: NGC2007002

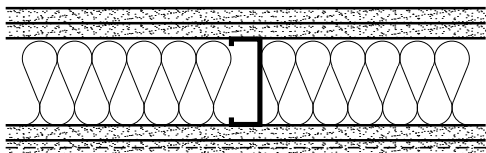
UL DESIGN: U411, V438



2 LAYERS 5/8" FIRE-SHIELD GYPSUM BOARD  
3 5/8" 25GA. STEEL STUDS 24" O.C.  
3" MINERAL FIBER INSULATION  
2 LAYERS 5/8" FIRE-SHIELD GYPSUM BOARD

**STC 56**  
TEST: NGC 3022

UL DESIGN: U411, V438



2 LAYERS 5/8" FIRE-SHIELD GYPSUM BOARD  
3 5/8" 25GA. STEEL STUDS 24" O.C.  
3 1/2" GLASS FIBER INSULATION  
5/8" FIRE-SHIELD GYPSUM BOARD  
5/8" SOUNDBREAK XP GYPSUM BOARD

**STC 60**  
TEST: RAL-TL07-168

DATE: 11/05/13	<b>SOUND RATINGS FOR 2 HOUR PARTITIONS</b>	<b>National Gypsum</b>
SCALE: 1 1/2"=1'-0"		