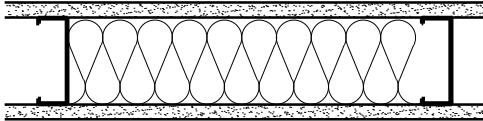


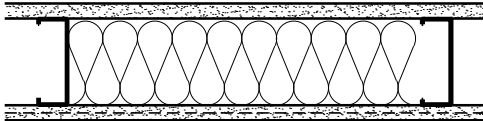
UL DESIGN: U465, V438



5/8" FIRE-SHIELD GYPSUM BOARD
 3 5/8" 25GA. STEEL STUDS 16" O.C.
 3 1/2" GLASS FIBER INSULATION
 5/8" FIRE-SHIELD GYPSUM BOARD

STC 43
 TEST: NGC 2502

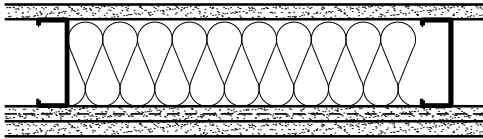
UL DESIGN: U465, V438



5/8" FIRE-SHIELD GYPSUM BOARD
 3 5/8" 25GA. STEEL STUDS 16" O.C.
 3 1/2" GLASS FIBER INSULATION
 5/8" SOUNDBREAK XP GYPSUM BOARD

STC 49
 TEST: NGC2009058

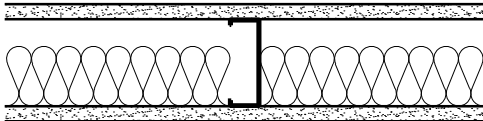
UL DESIGN: U465, V438



5/8" FIRE-SHIELD GYPSUM BOARD
 3 5/8" 25GA. STEEL STUDS 16" O.C.
 3 1/2" GLASS FIBER INSULATION
 5/8" SOUNDBREAK XP GYPSUM BOARD
 5/8" FIRE-SHIELD GYPSUM BOARD

STC 52
 TEST: RAL-TL07-148

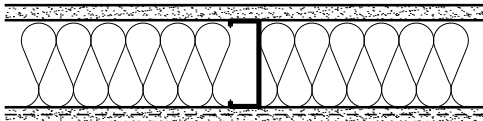
UL DESIGN: U465, V438



5/8" FIRE-SHIELD GYPSUM BOARD
 3 5/8" 25GA. STEEL STUDS 24" O.C.
 2 1/2" GLASS FIBER INSULATION
 5/8" FIRE-SHIELD GYPSUM BOARD

STC 47
 TEST: NGC 2386

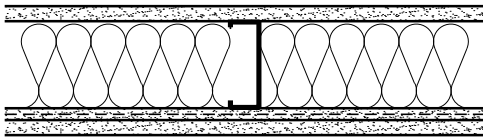
UL DESIGN: U465, V438



5/8" FIRE-SHIELD GYPSUM BOARD
 3 5/8" 25GA. STEEL STUDS 24" O.C.
 3" MINERAL FIBER INSULATION
 5/8" SOUNDBREAK XP GYPSUM BOARD

STC 54
 TEST: RAL-TL07-389

UL DESIGN: U465, V438



5/8" FIRE-SHIELD GYPSUM BOARD
 3 5/8" 25GA. STEEL STUDS 24" O.C.
 3 1/2" GLASS FIBER INSULATION
 1/2" SOUNDBREAK XP GYPSUM BOARD
 5/8" FIRE-SHIELD GYPSUM BOARD

STC 57
 TEST: RAL-TL06-334

DATE: 11/05/13	SOUND RATINGS FOR 1 HOUR PARTITIONS	
SCALE: 1 1/2"=1'-0"		